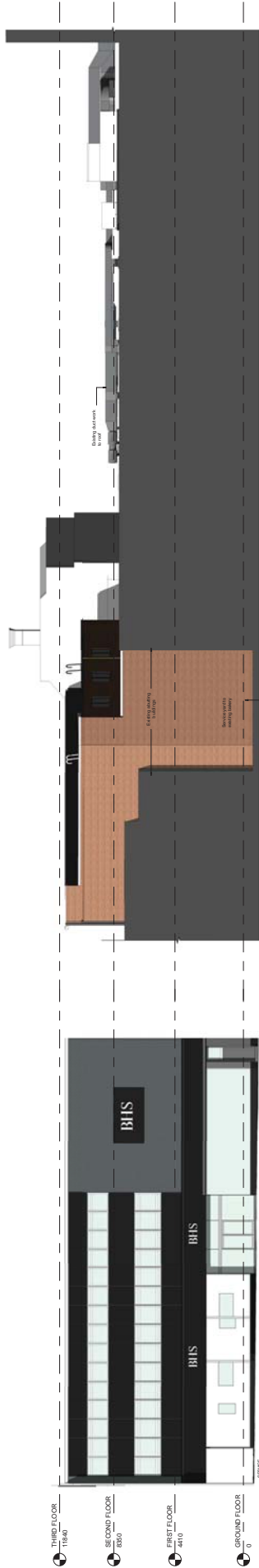
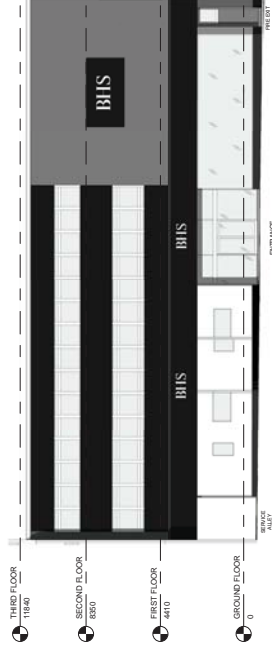


IMPORTANT NOTE:
 THIS DRAWING IS THE PROPERTY OF CUBE PLANNING AND SHOULD NOT BE REPRODUCED OR TRANSMITTED IN ANY FORM OR BY ANY MEANS, ELECTRONIC OR MECHANICAL, INCLUDING PHOTOCOPYING, RECORDING, OR BY ANY INFORMATION STORAGE AND RETRIEVAL SYSTEM, WITHOUT THE WRITTEN PERMISSION OF CUBE PLANNING.
 THIS DRAWING IS FOR THE BOARD.
 THE DRAWING IS THE PROPERTY OF CUBE PLANNING AND SHOULD NOT BE REPRODUCED OR TRANSMITTED IN ANY FORM OR BY ANY MEANS, ELECTRONIC OR MECHANICAL, INCLUDING PHOTOCOPYING, RECORDING, OR BY ANY INFORMATION STORAGE AND RETRIEVAL SYSTEM, WITHOUT THE WRITTEN PERMISSION OF CUBE PLANNING.
LIMITATIONS & THIRD PARTY CLAUSES:
 WHERE PART OF THE PROPERTY IS COVERED BY AN EASEMENT OR OTHER RIGHTS, THE DRAWING IS NOT TO BE CONSIDERED AS A GUARANTEE OF THE ACCURACY OF THE INFORMATION PROVIDED.
 CUBE PLANNING IS NOT RESPONSIBLE FOR THE DESIGN OF ANY STRUCTURE OR SERVICES PROVIDED BY OTHER PROFESSIONALS.
 CUBE PLANNING IS NOT RESPONSIBLE FOR THE DESIGN OF ANY STRUCTURE OR SERVICES PROVIDED BY OTHER PROFESSIONALS.

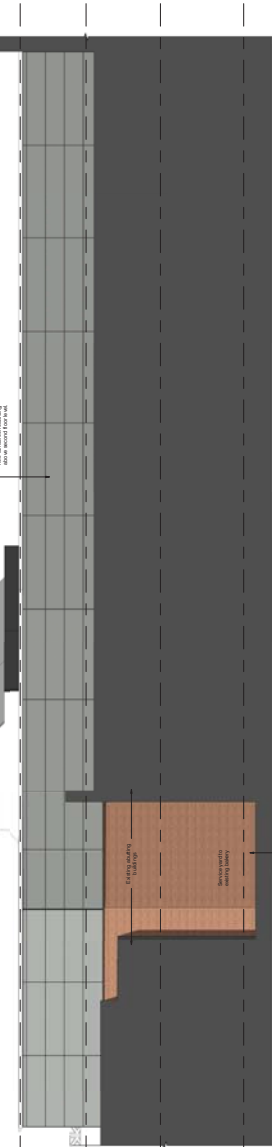


EXISTING FRONT ELEVATION
 Scale 1 : 100

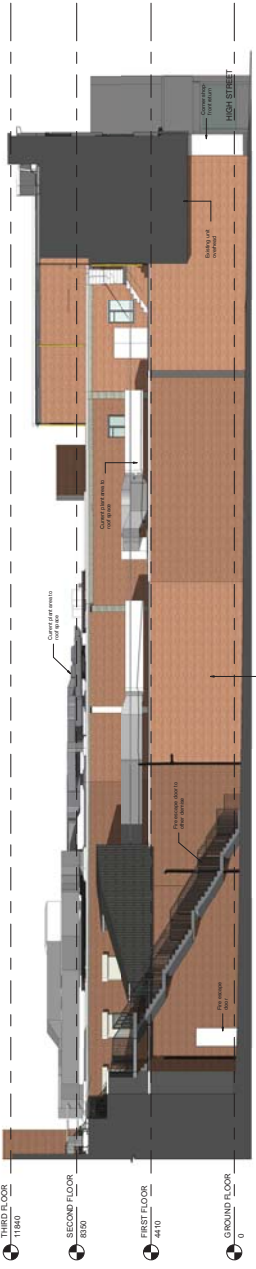
EXISTING ADJACENT ROOF ELEVATION
 Scale 1 : 100



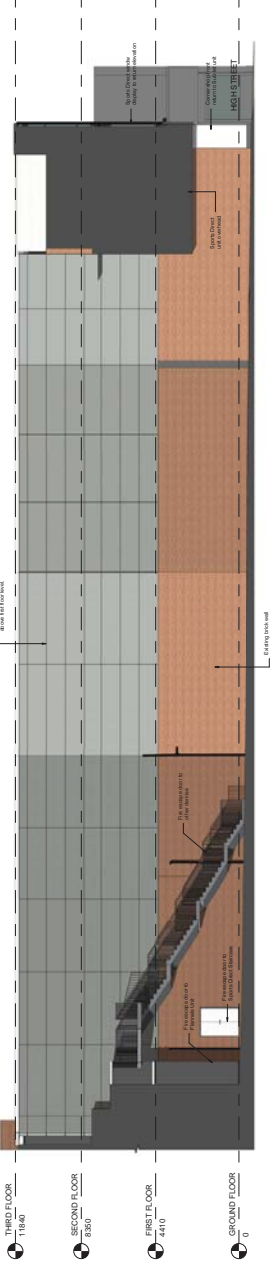
PROPOSED FRONT ELEVATION (No Change: Pursued Separately)
 Scale 1 : 100



PROPOSED ADJACENT ROOF ELEVATION
 Scale 1 : 100



EXISTING ALLEYWAY ELEVATION
 Scale 1 : 100



PROPOSED ALLEYWAY ELEVATION
 Scale 1 : 100

NO.	REVISION	DATE	BY
1	ISSUED FOR PERMIT	13.06.17	HP
2	REVISED FOR COMMENTS	13.06.17	HP
3	REVISED FOR COMMENTS	13.06.17	HP
4	REVISED FOR COMMENTS	13.06.17	HP
5	REVISED FOR COMMENTS	13.06.17	HP
6	REVISED FOR COMMENTS	13.06.17	HP
7	REVISED FOR COMMENTS	13.06.17	HP
8	REVISED FOR COMMENTS	13.06.17	HP
9	REVISED FOR COMMENTS	13.06.17	HP
10	REVISED FOR COMMENTS	13.06.17	HP
11	REVISED FOR COMMENTS	13.06.17	HP
12	REVISED FOR COMMENTS	13.06.17	HP
13	REVISED FOR COMMENTS	13.06.17	HP
14	REVISED FOR COMMENTS	13.06.17	HP
15	REVISED FOR COMMENTS	13.06.17	HP
16	REVISED FOR COMMENTS	13.06.17	HP
17	REVISED FOR COMMENTS	13.06.17	HP
18	REVISED FOR COMMENTS	13.06.17	HP
19	REVISED FOR COMMENTS	13.06.17	HP
20	REVISED FOR COMMENTS	13.06.17	HP
21	REVISED FOR COMMENTS	13.06.17	HP
22	REVISED FOR COMMENTS	13.06.17	HP
23	REVISED FOR COMMENTS	13.06.17	HP
24	REVISED FOR COMMENTS	13.06.17	HP
25	REVISED FOR COMMENTS	13.06.17	HP
26	REVISED FOR COMMENTS	13.06.17	HP
27	REVISED FOR COMMENTS	13.06.17	HP
28	REVISED FOR COMMENTS	13.06.17	HP
29	REVISED FOR COMMENTS	13.06.17	HP
30	REVISED FOR COMMENTS	13.06.17	HP
31	REVISED FOR COMMENTS	13.06.17	HP
32	REVISED FOR COMMENTS	13.06.17	HP
33	REVISED FOR COMMENTS	13.06.17	HP
34	REVISED FOR COMMENTS	13.06.17	HP
35	REVISED FOR COMMENTS	13.06.17	HP
36	REVISED FOR COMMENTS	13.06.17	HP
37	REVISED FOR COMMENTS	13.06.17	HP
38	REVISED FOR COMMENTS	13.06.17	HP
39	REVISED FOR COMMENTS	13.06.17	HP
40	REVISED FOR COMMENTS	13.06.17	HP
41	REVISED FOR COMMENTS	13.06.17	HP
42	REVISED FOR COMMENTS	13.06.17	HP
43	REVISED FOR COMMENTS	13.06.17	HP
44	REVISED FOR COMMENTS	13.06.17	HP
45	REVISED FOR COMMENTS	13.06.17	HP
46	REVISED FOR COMMENTS	13.06.17	HP
47	REVISED FOR COMMENTS	13.06.17	HP
48	REVISED FOR COMMENTS	13.06.17	HP
49	REVISED FOR COMMENTS	13.06.17	HP
50	REVISED FOR COMMENTS	13.06.17	HP
51	REVISED FOR COMMENTS	13.06.17	HP
52	REVISED FOR COMMENTS	13.06.17	HP
53	REVISED FOR COMMENTS	13.06.17	HP
54	REVISED FOR COMMENTS	13.06.17	HP
55	REVISED FOR COMMENTS	13.06.17	HP
56	REVISED FOR COMMENTS	13.06.17	HP
57	REVISED FOR COMMENTS	13.06.17	HP
58	REVISED FOR COMMENTS	13.06.17	HP
59	REVISED FOR COMMENTS	13.06.17	HP
60	REVISED FOR COMMENTS	13.06.17	HP
61	REVISED FOR COMMENTS	13.06.17	HP
62	REVISED FOR COMMENTS	13.06.17	HP
63	REVISED FOR COMMENTS	13.06.17	HP
64	REVISED FOR COMMENTS	13.06.17	HP
65	REVISED FOR COMMENTS	13.06.17	HP
66	REVISED FOR COMMENTS	13.06.17	HP
67	REVISED FOR COMMENTS	13.06.17	HP
68	REVISED FOR COMMENTS	13.06.17	HP
69	REVISED FOR COMMENTS	13.06.17	HP
70	REVISED FOR COMMENTS	13.06.17	HP
71	REVISED FOR COMMENTS	13.06.17	HP
72	REVISED FOR COMMENTS	13.06.17	HP
73	REVISED FOR COMMENTS	13.06.17	HP
74	REVISED FOR COMMENTS	13.06.17	HP
75	REVISED FOR COMMENTS	13.06.17	HP
76	REVISED FOR COMMENTS	13.06.17	HP
77	REVISED FOR COMMENTS	13.06.17	HP
78	REVISED FOR COMMENTS	13.06.17	HP
79	REVISED FOR COMMENTS	13.06.17	HP
80	REVISED FOR COMMENTS	13.06.17	HP
81	REVISED FOR COMMENTS	13.06.17	HP
82	REVISED FOR COMMENTS	13.06.17	HP
83	REVISED FOR COMMENTS	13.06.17	HP
84	REVISED FOR COMMENTS	13.06.17	HP
85	REVISED FOR COMMENTS	13.06.17	HP
86	REVISED FOR COMMENTS	13.06.17	HP
87	REVISED FOR COMMENTS	13.06.17	HP
88	REVISED FOR COMMENTS	13.06.17	HP
89	REVISED FOR COMMENTS	13.06.17	HP
90	REVISED FOR COMMENTS	13.06.17	HP
91	REVISED FOR COMMENTS	13.06.17	HP
92	REVISED FOR COMMENTS	13.06.17	HP
93	REVISED FOR COMMENTS	13.06.17	HP
94	REVISED FOR COMMENTS	13.06.17	HP
95	REVISED FOR COMMENTS	13.06.17	HP
96	REVISED FOR COMMENTS	13.06.17	HP
97	REVISED FOR COMMENTS	13.06.17	HP
98	REVISED FOR COMMENTS	13.06.17	HP
99	REVISED FOR COMMENTS	13.06.17	HP
100	REVISED FOR COMMENTS	13.06.17	HP

CLIENT: SPORTSDIRECT (COMMERCIAL) LTD
PROJECT: 8937 HIGH STREET WOL17 2DQ
DRAWING TITLE: EXISTING & PROPOSED ELEVATIONS
CHECKED BY:
DATE: 13.06.2017
SCALE: 1 : 100 @ A3
DRAWING NO: CPM 1518017 C

cube.
 Project Management | Building Surveys
 Planning | Commercial | Engineering Services
 8937 HIGH STREET WOL17 2DQ
 WOLVERHAMPTON | WOLVERHAMPTON | WOLVERHAMPTON